



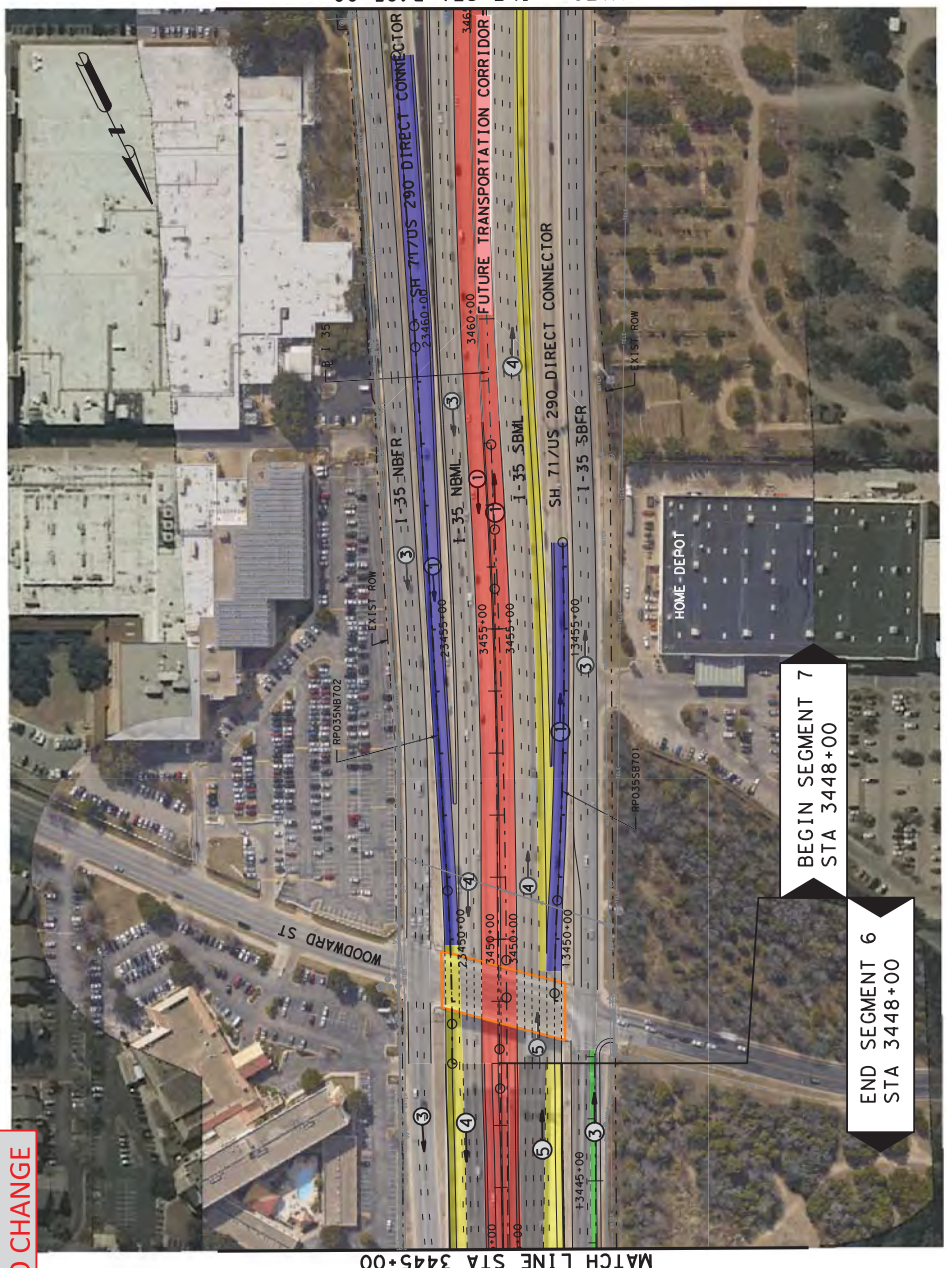
---

I-35 Capital Area Improvement Program  
Corridor Implementation Plan  
Appendix B  
Refined Improvements Concepts

---

**This Page Intentionally Left Blank**

**PRELIMINARY  
SUBJECT TO CHANGE**



MATCH LINE STA 3465+00

MATCH LINE STA 3445+00

**END SEGMENT 6  
STA 3448+00**

**BEGIN SEGMENT 7  
STA 3448+00**

INTERIM REVIEW ONLY  
Document incomplete: not intended for  
permit, bidding or construction.  
Project Name: I-35 SBFR  
P.E. Serial No.: 44290  
Date: 8/1/2013

1" = 200' (H)



I-35 CAIP  
FROM: SH 45N TO SH 45S  
**PLAN SHEET  
SEGMENT 6 & 7**

STA 3445+00 TO STA 3465+00

SHEET 2 OF 5  
REF. SCHEMATIC: ROLL 10 OF 15

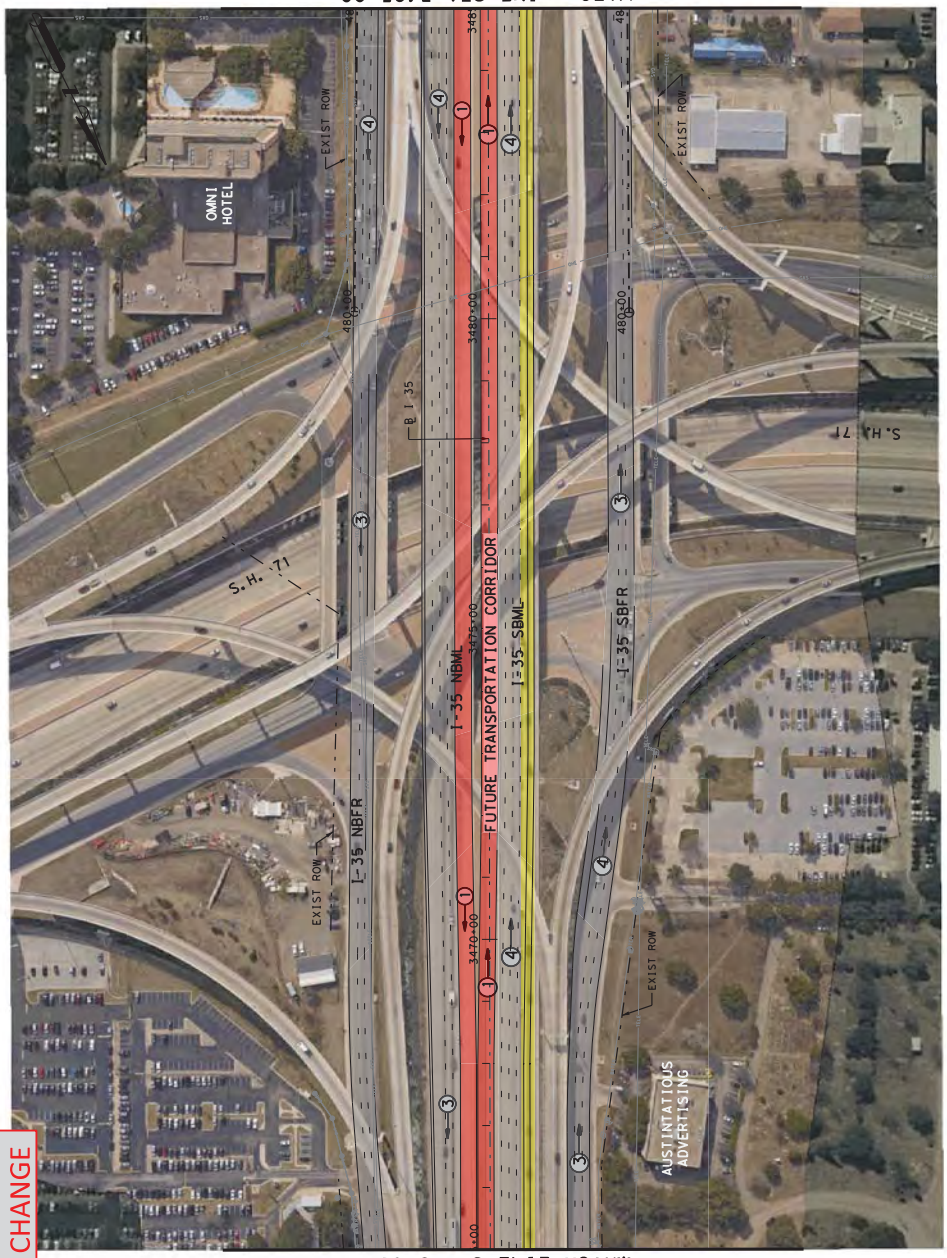
**LEGEND:**

- FUTURE TRANSPORTATION CORRIDOR
- MAIN LANE
- FRONTAGE ROAD/ INTERSECTION
- COLLECTOR DISTRIBUTOR/ DIRECT CONNECTOR/RAMP
- BRIDGE
- MILL AND OVERLAY
- EXISTING PAVEMENT
- REMOVAL
- LID
- EXISTING ROW
- PROPOSED ROW
- PROPOSED CENTERLINE/BASELINE
- PROPOSED RETAINING WALL
- NUMBER OF LANES (TRAFFIC DIRECTION)

**NOTES:**

1. EXISTING DRAINAGE STRUCTURES SHOWN INCLUDE MAJOR FEMA CROSSINGS ONLY.
2. REFER TO HORIZONTAL ALIGNMENT DATA REPORTS FOR CURVE DATA.
3. THE INFORMATION SHOWN ON THIS DRAWING CONCERNING TYPE AND LOCATION OF UNDERGROUND UTILITIES IS NOT GUARANTEED TO BE ACCURATE. INVESTIGATE AND VERIFY ALL UTILITIES IN THE FIELD VERIFIED PRIOR TO BEGINNING CONSTRUCTION ACTIVITIES.

**PRELIMINARY  
SUBJECT TO CHANGE**



**LEGEND:**

- FUTURE TRANSPORTATION CORRIDOR
- MAIN LANE
- FRONTAGE ROAD/ INTERSECTION
- COLLECTOR DISTRIBUTOR/ DIRECT CONNECTOR/RAMP
- BRIDGE
- MILE AND OVERLAY EXISTING PAVEMENT
- REMOVAL
- LID
- EXISTING ROW
- PROPOSED ROW
- PROPOSED CENTERLINE/BASELINE
- PROPOSED RETAINING WALL
- NUMBER OF LANES (TRAFFIC DIRECTION)

**NOTES:**

1. EXISTING DRAINAGE STRUCTURES SHOWN INCLUDE MAJOR FEMA CROSSINGS ONLY.
2. REFER TO HORIZONTAL ALIGNMENT DATA REPORTS FOR CURVE DATA.
3. THE INFORMATION SHOWN ON THIS DRAWING CONCERNING TYPE AND LOCATION OF UNDERGROUND UTILITIES IS NOT GUARANTEED TO BE ACCURATE. INVESTIGATE AND VERIFY ALL UTILITIES IN THE FIELD VERIFIED PRIOR TO BEGINNING CONSTRUCTION ACTIVITIES.

INTERIM REVIEW ONLY  
Document incomplete: not intended for permit, bidding or construction.  
P.E. Serial No.: 44282-SP-0001  
64290  
Date: 8/1/2013

1" = 200' (H)

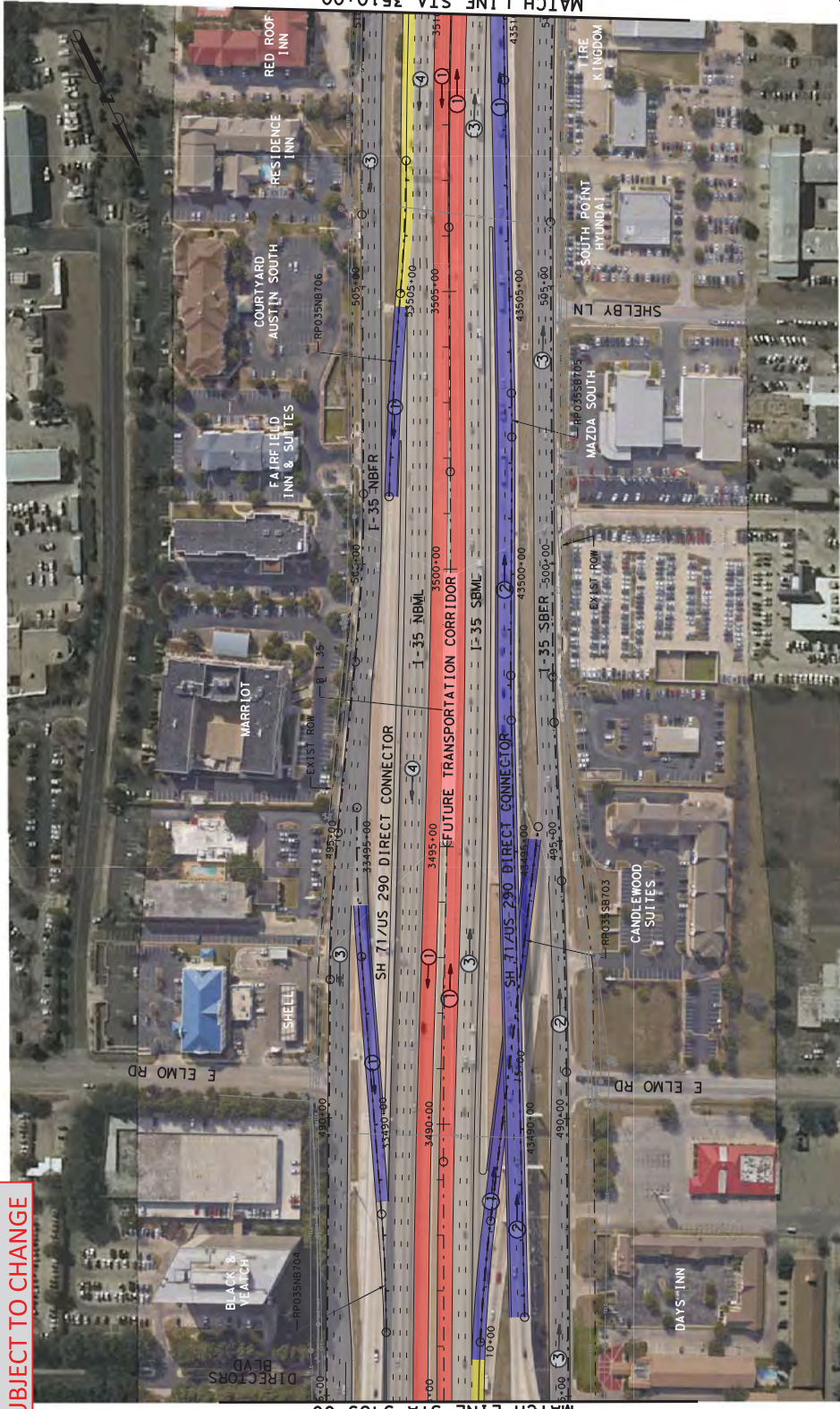


I-35 CAIP  
FROM: SH 45N TO SH 45S  
**PLAN SHEET  
SEGMENT 7**

STA 3465+00 TO STA 3485+00

SHEET 3 OF 5  
REF. SCHEMATIC ROLL 10 OF 15

**PRELIMINARY  
SUBJECT TO CHANGE**



**LEGEND:**

	REMOVAL
	LID
	EXISTING ROW
	PROPOSED ROW
	PROPOSED CENTERLINE/BASELINE
	COLLECTOR DISTRIBUTOR/DIRECT CONNECTOR/RAMP
	BRIDGE
	MILL AND OVERLAY
	EXISTING PAVEMENT
	FUTURE TRANSPORTATION CORRIDOR
	MAIN LANE
	FRONTAGE ROAD/INTERSECTION
	PROPOSED CENTERLINE/BASELINE
	PROPOSED RETAINING WALL
	NUMBER OF LANES (TRAFFIC DIRECTION)

- NOTES:**
- EXISTING DRAINAGE STRUCTURES SHOWN INCLUDE MAJOR FEMA CROSSINGS ONLY.
  - REFER TO HORIZONTAL ALIGNMENT DATA REPORTS FOR CURVE DATA.
  - THE INFORMATION SHOWN ON THIS DRAWING CONCERNING TYPE AND LOCATION OF UNDERGROUND UTILITIES IS NOT GUARANTEED TO BE ACCURATE. INVESTIGATE AND VERIFY ALL UTILITIES IN THE FIELD VERIFIED PRIOR TO BEGINNING CONSTRUCTION ACTIVITIES.

**LEGEND:**

	REMOVAL
	LID
	EXISTING ROW
	PROPOSED ROW
	PROPOSED CENTERLINE/BASELINE
	COLLECTOR DISTRIBUTOR/DIRECT CONNECTOR/RAMP
	BRIDGE
	MILL AND OVERLAY
	EXISTING PAVEMENT
	FUTURE TRANSPORTATION CORRIDOR
	MAIN LANE
	FRONTAGE ROAD/INTERSECTION
	PROPOSED CENTERLINE/BASELINE
	PROPOSED RETAINING WALL
	NUMBER OF LANES (TRAFFIC DIRECTION)

INTERIM REVIEW ONLY  
Document incomplete: not intended for permit, bidding or construction.  
P.E. Serial No.: MDCR-SP-1000  
Date: 8/1/2013

1" = 200' (H)



I-35 CAIP  
FROM: SH 45N TO SH 45S  
**PLAN SHEET  
SEGMENT 7**

STA 3485+00 TO STA 3510+00

SHEET 4 OF 5  
REF. SCHEMATIC ROLL 10 OF 15

**PRELIMINARY  
SUBJECT TO CHANGE**



INTERIM REVIEW ONLY  
Document incomplete: not intended for  
permit, bidding, or construction.  
P.E. Serial No.: 44290  
Date: 8/17/2013

1" = 200' (H)



I-35 CAIP  
FROM: SH 45N TO SH 45S  
PLAN SHEET  
SEGMENT 7

STA 3510+00 TO STA 3535+00  
SHEET 5 OF 5  
REF. SCHEMATIC: ROLL 10 OF 15

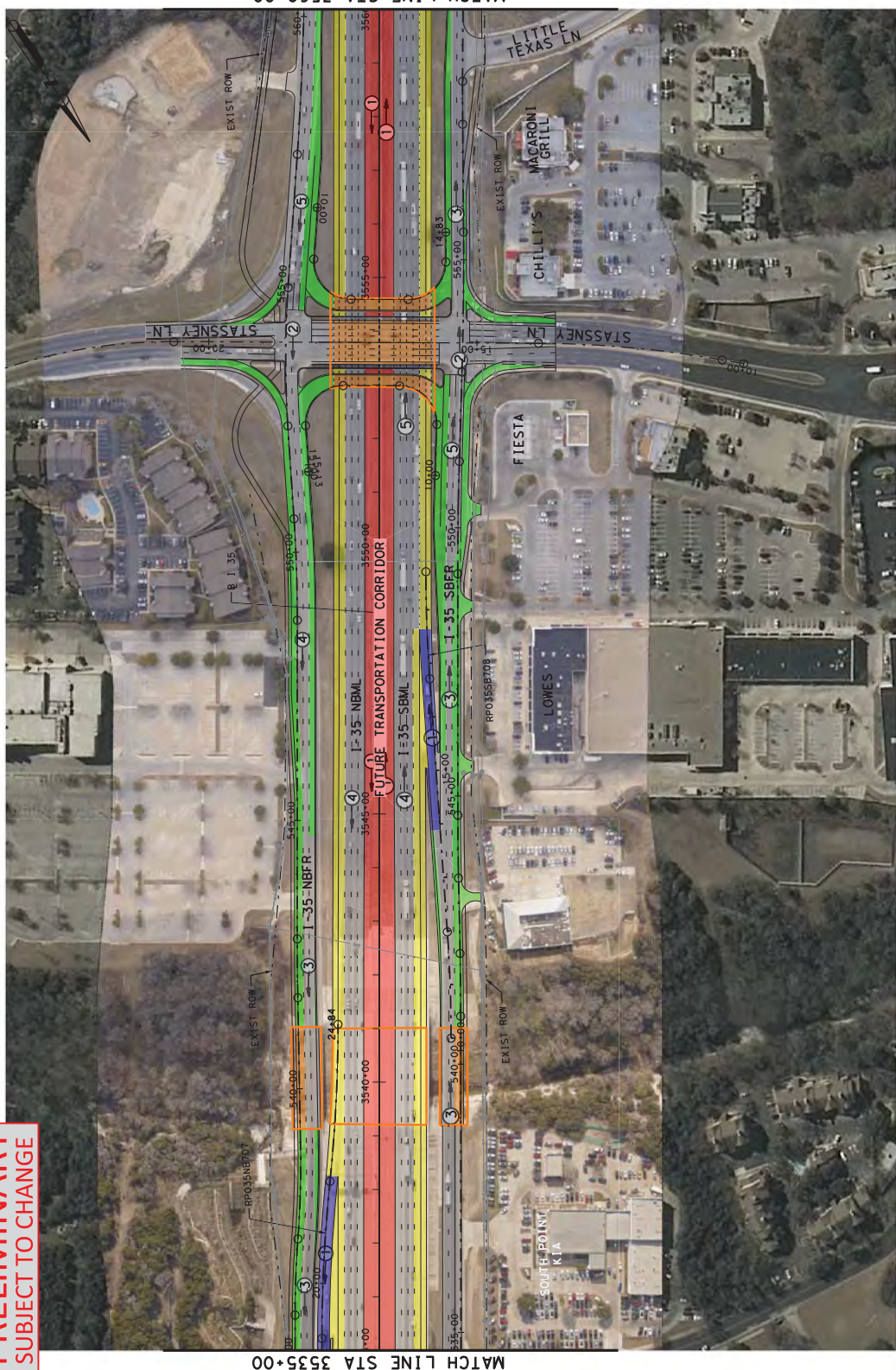
**LEGEND:**

- FUTURE TRANSPORTATION CORRIDOR
- MAIN LANE
- FRONTAGE ROAD/ INTERSECTION
- COLLECTOR DISTRIBUTOR/ DIRECT CONNECTOR/RAMP
- BRIDGE
- MILL AND OVERLAY EXISTING PAVEMENT
- REMOVAL
- LID
- EXISTING ROW
- PROPOSED ROW
- PROPOSED CENTERLINE/BASELINE
- PROPOSED RETAINING WALL
- NUMBER OF LANES (TRAFFIC DIRECTION)

**NOTES:**

1. EXISTING DRAINAGE STRUCTURES SHOWN INCLUDE MAJOR FEMA CROSSINGS ONLY.
2. REFER TO HORIZONTAL ALIGNMENT DATA REPORTS FOR CURVE DATA.
3. THE INFORMATION SHOWN ON THIS DRAWING CONCERNING TYPE AND LOCATION OF UNDERGROUND UTILITIES IS NOT GUARANTEED TO BE ACCURATE. INVESTIGATE AND VERIFY ALL UTILITIES IN THE FIELD VERIFIED PRIOR TO BEGINNING CONSTRUCTION ACTIVITIES.

**PRELIMINARY  
SUBJECT TO CHANGE**



**LEGEND:**

- |  |   |
|--|---|
|  | REMOVAL                                     |
|  | LID   |
|  | EXISTING ROW                                |
|  | PROPOSED ROW                                |
|  | PROPOSED CENTERLINE/BASELINE                |
|  | COLLECTOR DISTRIBUTOR/DIRECT CONNECTOR/RAMP |
|  | BRIDGE                                      |
|  | MILL AND OVERLAY                            |
|  | EXISTING PAVEMENT                           |
|  | FUTURE TRANSPORTATION CORRIDOR              |
|  | MAIN LANE                                   |
|  | FRONTAGE ROAD/INTERSECTION                  |
|  | PROPOSED CENTERLINE/BASELINE                |
|  | PROPOSED RETAINING WALL                     |
|  | NUMBER OF LANES (TRAFFIC DIRECTION)         |

**NOTES:**

- EXISTING DRAINAGE STRUCTURES SHOWN INCLUDE MAJOR FEMA CROSSINGS ONLY.
- REFER TO HORIZONTAL ALIGNMENT DATA REPORTS FOR CURVE DATA.
- THE INFORMATION SHOWN ON THIS DRAWING CONCERNING TYPE AND LOCATION OF UNDERGROUND UTILITIES IS NOT GUARANTEED TO BE ACCURATE. INVESTIGATE THE FIELD AND VERIFY PRIOR TO BEGINNING CONSTRUCTION ACTIVITIES.

INTERIM REVIEW ONLY  
Document incomplete: not intended for permit, bidding or construction.  
P.E. Serial No.: MDOBEL SP1662  
Date: 8/1/2013

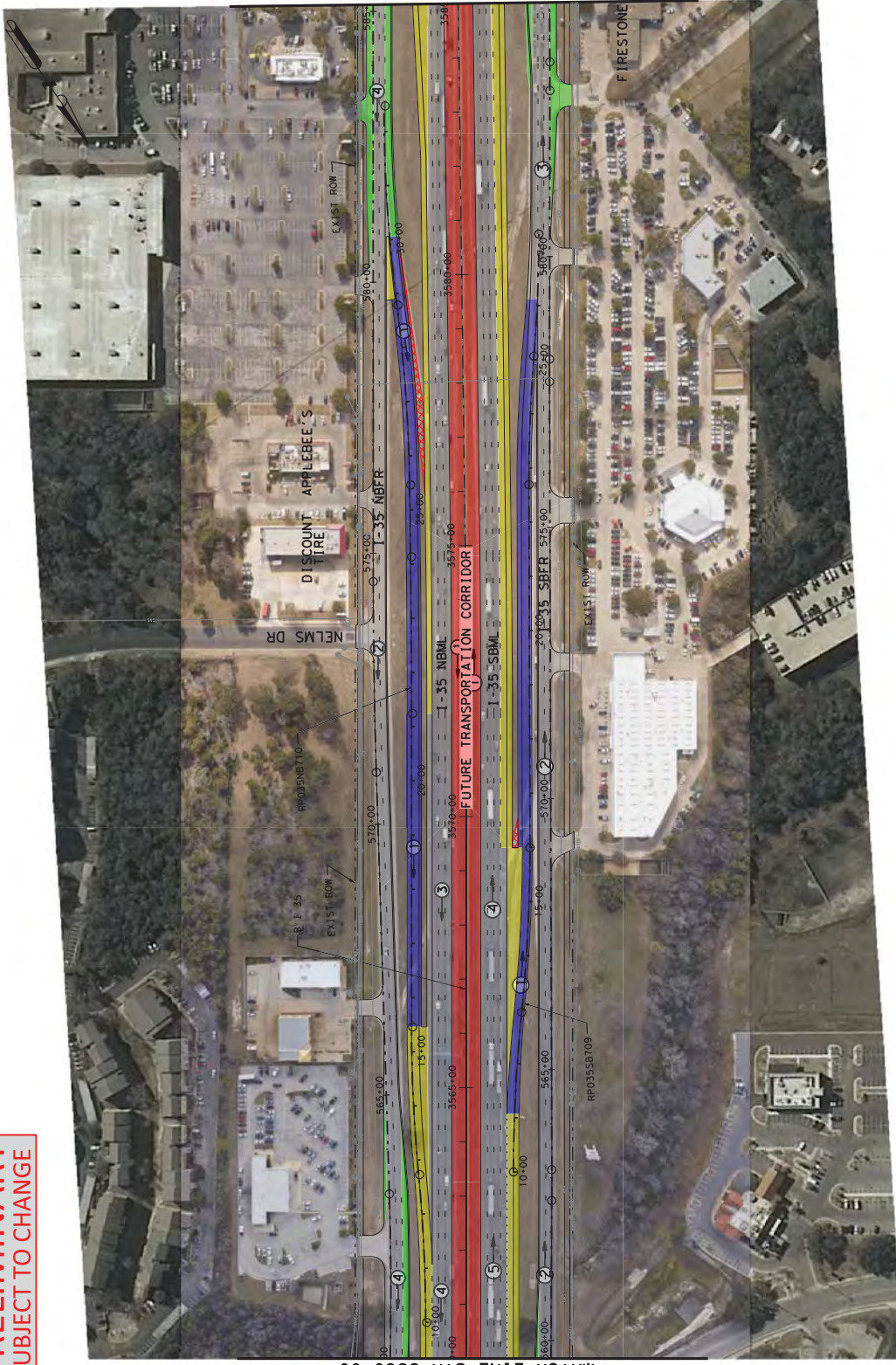
1" = 200' (H)



I-35 CAIP  
FROM: SH 45N TO SH 45S  
PLAN SHEET  
SEGMENT 7

STA 3535+00 TO STA 3560+00

**PRELIMINARY  
SUBJECT TO CHANGE**



**LEGEND:**

- FUTURE TRANSPORTATION CORRIDOR
- MAIN LANE
- FRONTAGE ROAD/ INTERSECTION
- COLLECTOR DISTRIBUTOR/ DIRECT CONNECTOR/RAMP
- BRIDGE
- MILL AND OVERLAY EXISTING PAVEMENT
- REMOVAL
- LID
- EXISTING ROW
- PROPOSED ROW
- PROPOSED CENTERLINE/BASELINE
- PROPOSED RETAINING WALL
- NUMBER OF LANES (TRAFFIC DIRECTION)

**NOTES:**

1. EXISTING DRAINAGE STRUCTURES SHOWN INCLUDE MAJOR FEMA CROSSINGS ONLY.
2. REFER TO HORIZONTAL ALIGNMENT DATA REPORTS FOR CURVE DATA.
3. THE INFORMATION SHOWN ON THIS DRAWING CONCERNING TYPE AND LOCATION OF UNDERGROUND UTILITIES IS NOT GUARANTEED TO BE ACCURATE. INVESTIGATE AND VERIFY ALL UTILITIES IN THE FIELD VERIFIED PRIOR TO BEGINNING CONSTRUCTION ACTIVITIES.

INTERIM REVIEW ONLY  
Document incomplete: not intended for permit, bidding or construction.  
P.E. Serial No.: MDCR-SP-1000  
Date: 8/1/2013

1" = 200' (H)

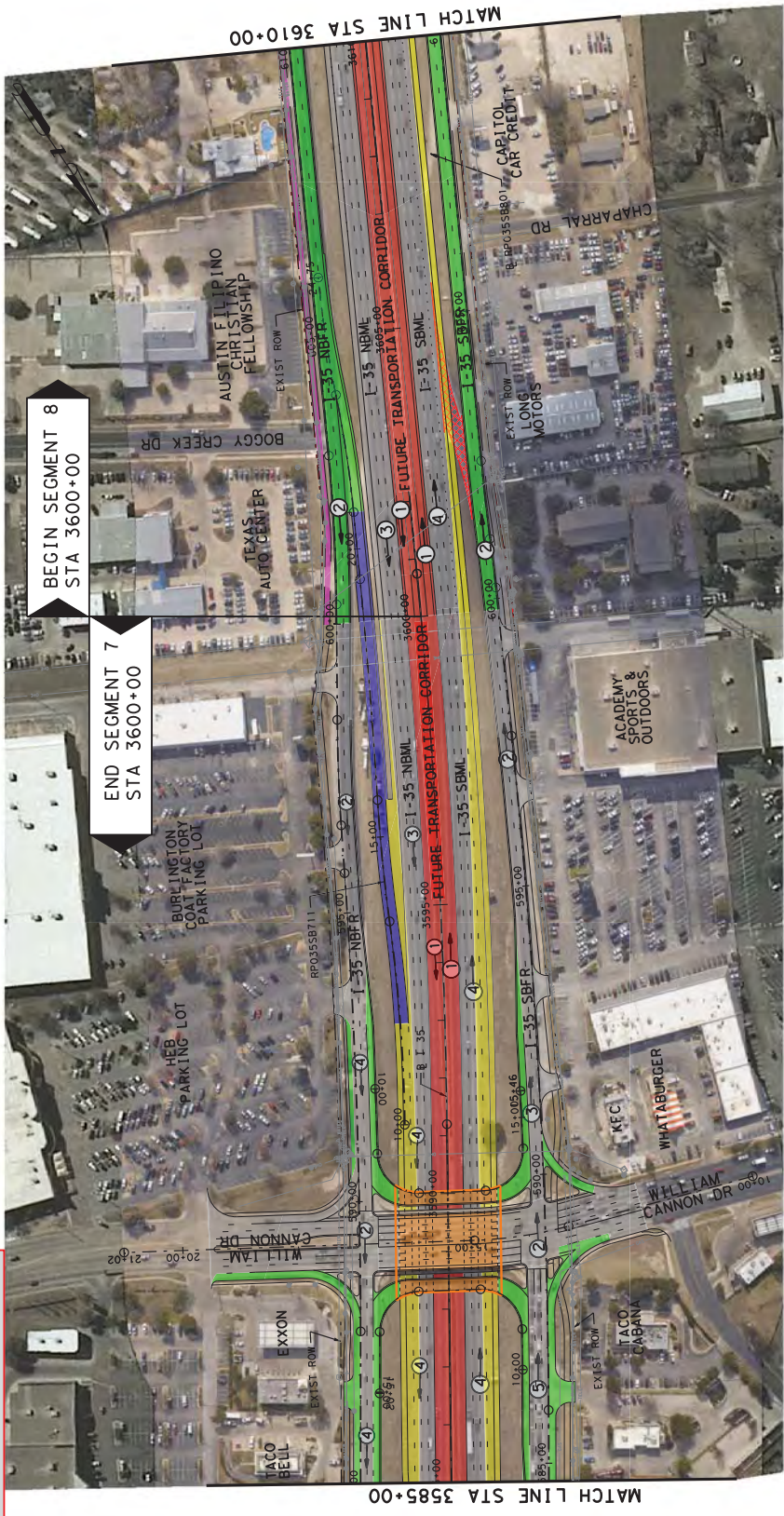


I-35 CAIP  
FROM: SH 45N TO SH 45S  
**PLAN SHEET  
SEGMENT 7**

STA 3560+00 TO STA 3585+00

SHEET 2 OF 5  
REF. SCHEMATIC: ROLL-T10F-15

**PRELIMINARY  
SUBJECT TO CHANGE**



1" = 200' (H)



I-35 CAIP  
FROM: SH 45N TO SH 45S  
**PLAN SHEET  
SEGMENT 7 & 8**  
STA 3585+00 TO STA 3610+00  
SHEET 3 OF 5  
REF. SCHEMATIC ROLL 11 OF 15

**LEGEND:**

- FUTURE TRANSPORTATION CORRIDOR
- MAIN LANE
- FRONTAGE ROAD/ INTERSECTION
- COLLECTOR DISTRIBUTOR/ DIRECT CONNECTOR/RAMP
- BRIDGE
- MILL AND OVERLAY EXISTING PAVEMENT
- REMOVAL
- LID
- EXISTING ROW
- PROPOSED ROW
- PROPOSED CENTERLINE/BASELINE
- PROPOSED RETAINING WALL
- NUMBER OF LANES (TRAFFIC DIRECTION)

**NOTES:**

1. EXISTING DRAINAGE STRUCTURES SHOWN INCLUDE MAJOR FEMA CROSSINGS ONLY.
2. REFER TO HORIZONTAL ALIGNMENT DATA REPORTS FOR CURVE DATA.
3. THE INFORMATION SHOWN ON THIS DRAWING CONCERNING TYPE AND LOCATION OF UNDERGROUND UTILITIES IS NOT GUARANTEED TO BE ACCURATE. INVESTIGATE AND VERIFY ALL UTILITIES IN THE FIELD PRIOR TO BEGINNING CONSTRUCTION ACTIVITIES.